

A photograph of a school computer lab with students at computers. The image is dimmed to serve as a background for the title text.

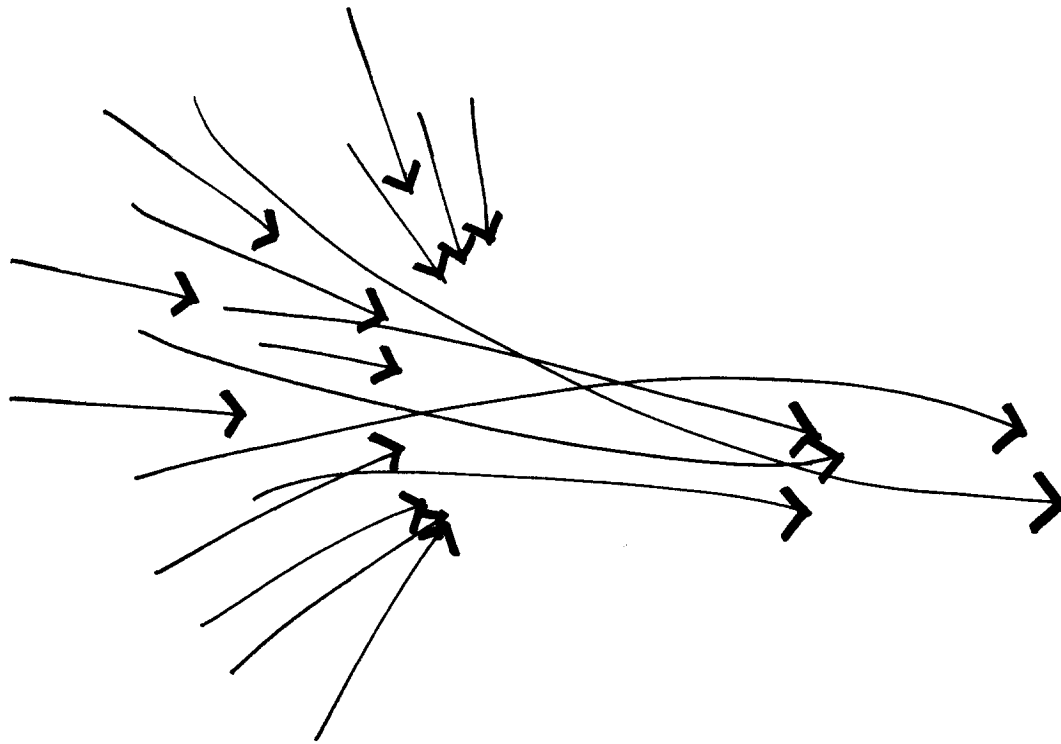
Atlanta Public Schools FACILITIES MASTER PLANNING

March 17, 2022

Agenda – Dunbar Meeting

1. Overview
2. Review Approach and Scenarios:
 - Criteria
 - Findings
 - Scenarios
3. Next Steps
4. Engagement

Strategic Facilities Master Planning for APS



Metro Atlanta

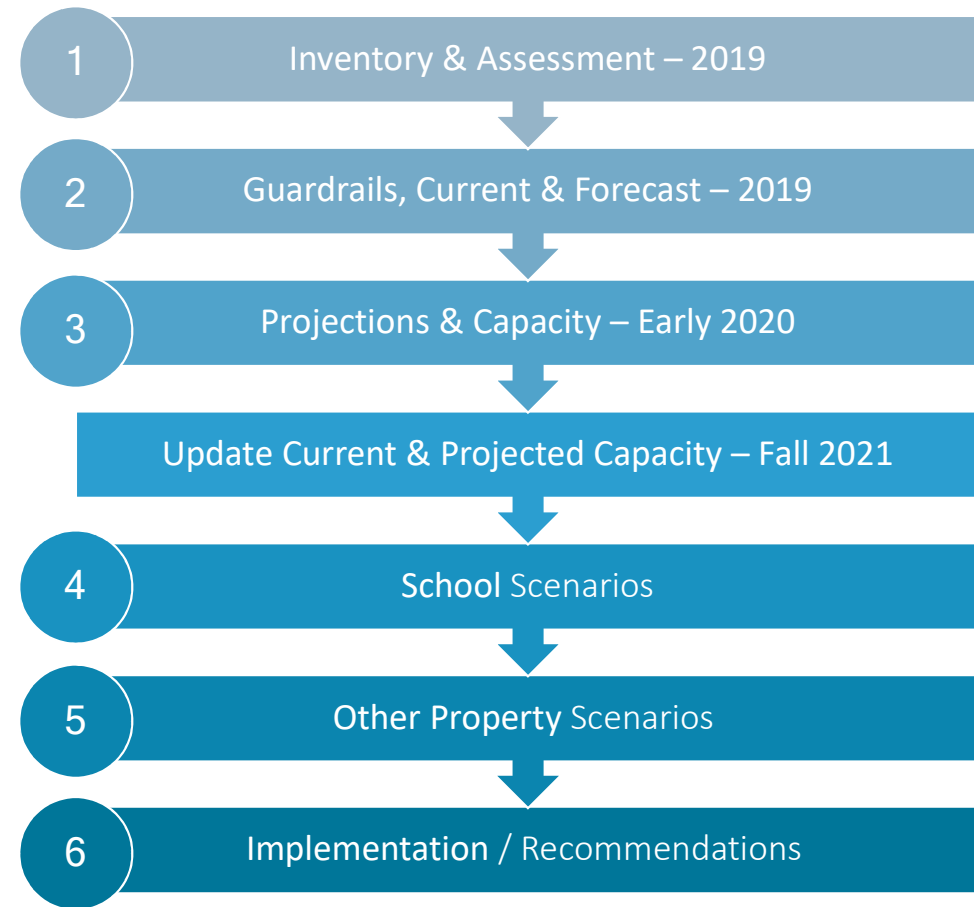
Cluster

School

Capital Project

Scope & Flow

- Through February 2020
- Update Fall 2021
- Re - ENGAGEMENT
 - Board
 - Community



Facilities Master Plan Goals

The planning for this project is guided by these goals:

To equitably create innovative, sustainable, flexible, and efficient environments.

To equitably provide quality schools that align facility and academic objectives to strengthen communities.

To equitably distribute instructional space among facilities.

To equitably align property use, disposition, and acquisition with APS values and priorities while exploring alternative opportunities for the usage of facilities.

Engagement and Communication



Community Conversations



Communication Briefs

Response to Let's Talk Questions
FAQ
Summary Flyers



Other



Approach and Scenarios



Set Criteria

Identify Challenges
& Opportunities

Studied Scenarios

Criteria & Considerations

Criteria:

Meet APS BoE Goals: Schools and Other Properties

Build Community

Meet the FMP Guardrails: School and Site Capacity

Incorporate Facility's Geographic Setting

Considerations:

Relieve Pressure at Schools over Capacity

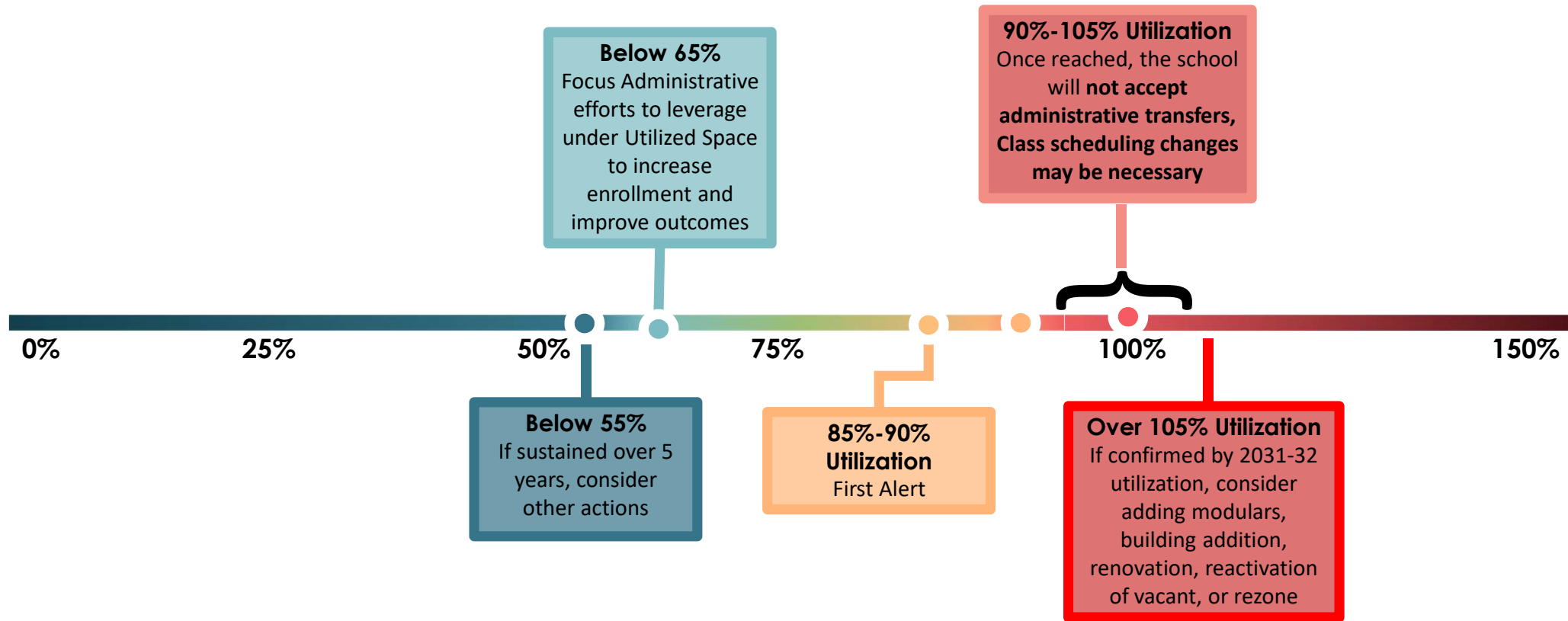
Boost Enrollment at under-capacity schools

Leverage Physical Boundaries: Neighborhoods, Roads, etc.

Manage the Impact of Change

Optimize 'feeder' (matriculation) pattern/flow from elementary through high school

Criteria: Triggers by Utilization



Problem Statement

Problem Statement – We found that:

- Through 2031-32, the district has enough facility space to house the 2031-32 enrollment capacity, but it is not evenly distributed;
- Growth rate is shifting from what it is today
- Growth is projected to be at a slightly slower rate than pre-COVID
- Post COVID 'norm' is still unknown

Therefore, the plan needs to focus on:

- Addressing the most immediate overcrowding conditions. This may include accelerating decisions that are critical in the next 2-3 years
- Establishing sound scenarios for implementation through 2026-27
- Being Flexible – allow to adjust for the real post COVID norm
- Setting a process for more frequent reviews and updates

In some cases, up to two scenarios are provided...

From Defining the Problem to Scenarios

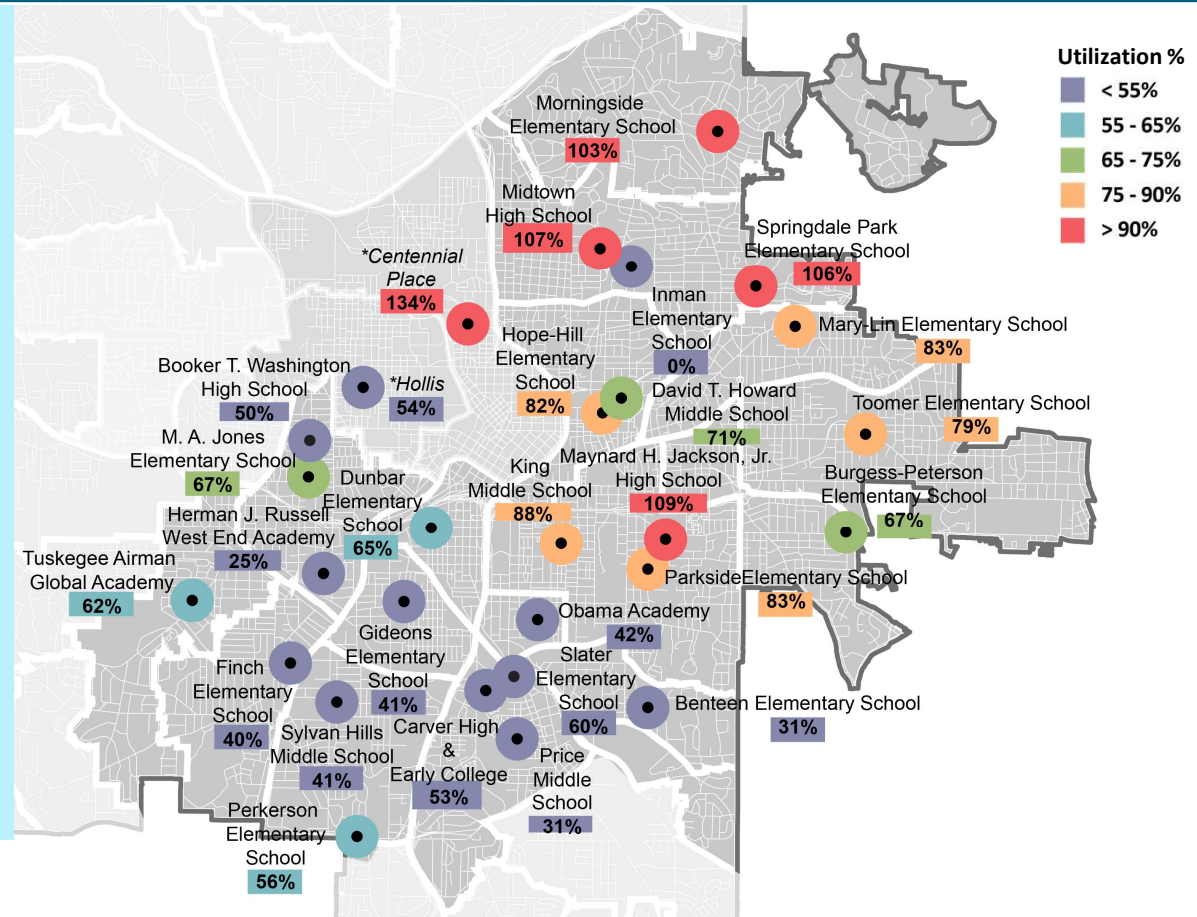
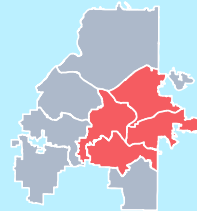
The following Scenarios have been divided into four sets of Clusters based on the interrelated nature of their issues, or on the similarity of their issues. Each grouping has a Recommended Scenario and an Alternate Scenario:

1. **North Atlanta, South Atlanta, and Therrell** are grouped together and characterized by generally low utilization in their school facilities.
2. **Douglass Cluster** is characterized by a mixed and uneven distribution of Utilization among its school facilities with Woodson Park nearing full utilization while other schools have lower utilization.
3. **Mays Cluster** is characterized by over utilization in a group of elementary schools which are expected to experience continued growth.
4. **Midtown, Jackson, Washington and Carver** are characterized by extremely uneven utilization among its Elementary Schools, Middle Schools and High Schools.

Midtown, Jackson, Washington, and Carver Clusters-- “Do Nothing” Utilization 2026-27

Future utilization, without changes to the facilities,

- Midtown Clusters have over utilization in both K-5 and K-8 schools
- Midtown and Jackson High Schools will become over utilized.
- Midtown High School site cannot accommodate additional construction or portable classrooms.
- Inman facility is vacant
- Underutilization in the Middle Schools in the Carver and Washington clusters.



Midtown, Jackson, Washington, and Carver Clusters

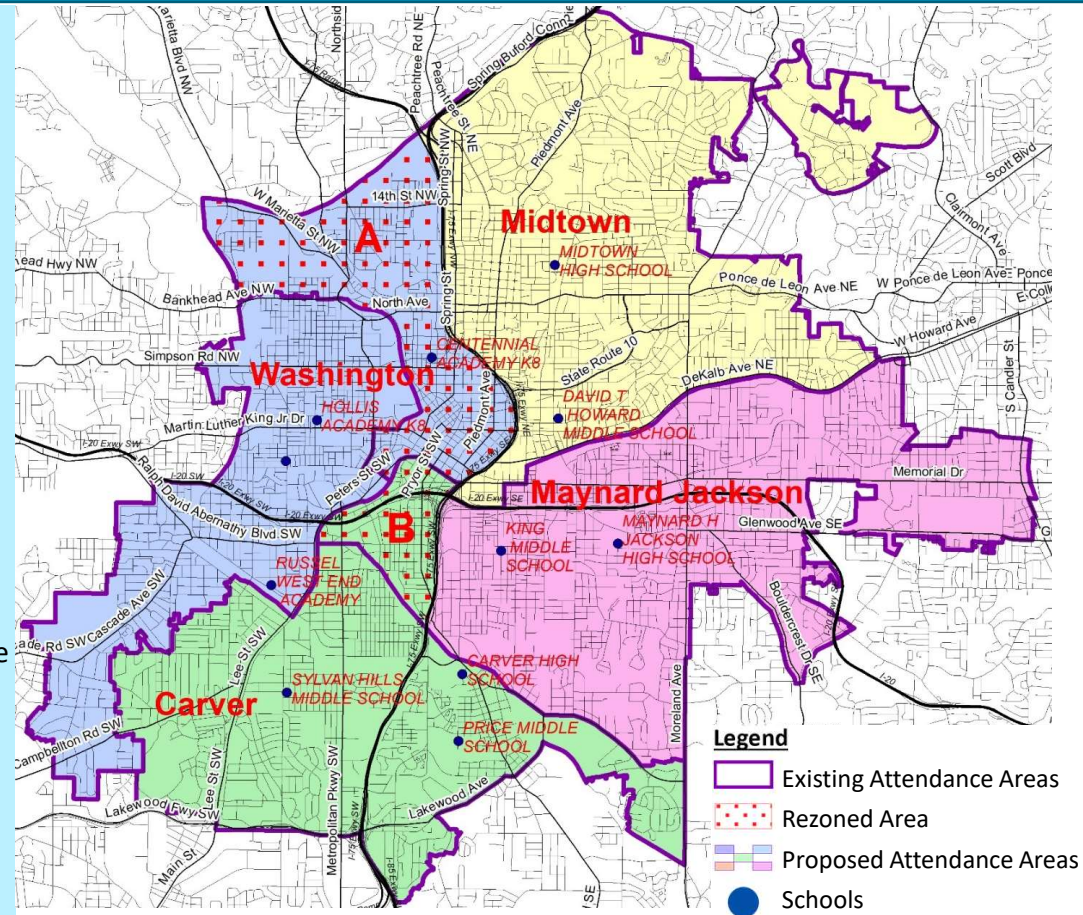
Scenario 1: Actions Addressing Middle, High & K-8 Schools 2026-27

Middle School and High School Cluster Moves

- Redistrict in 2023-24 SY across Midtown, Jackson, Washington, and Carver clusters:
 - A: **Redistrict Centennial attendance area** from Midtown HS to Washington HS (affects 229 students).
 - B: **Redistrict Dunbar attendance area** from MLK MS (Jackson HS) to Price MS (Carver Cluster HS) (163 middle school students affected and 255 High School students).

To Provide Capacity at Centennial Academy(K-8):

- In the Fall of 2022, Centennial and APS will determine a pathway for charter renewal which will affect Scenario 1 or Scenario 2 which will be subject to ABOE and GaDoE approvals.
- Centennial Academy will **change to a K-8 Locally Authorized charter** for the 2024-25 SY contingent on ABOE and GaDOE approval.
- The Centennial attendance area will be incorporated into Hollis Academy (K-8):
 - A: Redistrict 398 students from Centennial Academy to Hollis Academy during the 2024-25 school year (these are all the in-zone K-8 students).
- For the 2024-25 renewal, Centennial and APS would negotiate enrollment and facilities, limited by whatever enrollment cap is set by the Charter.
- Centennial's Capacity is now 606. Modulars are used to achieve its currently chartered maximum enrollment of 800 at the loss of athletic and recreational field space.



Midtown, Jackson, Washington, and Carver Clusters-- Scenario 1: Middle, High & K-8 School Utilization Comparison 2026-27

Cluster	School	"As-Is" 2026-27 SY			Scenario 1. Centennial to Washington [2024-25], Dunbar to Price [2023-24]				
		Enrollment	Capacity	Utilization	Enrollment	Enrollment Difference	Capacity	Capacity Difference	Utilization
Carver	Price MS	295	960	31%	458	+163	960	0	48%
	Sylvan Hills MS	378	922	41%	378	0	922	0	41%
	Carver HS + Early College	820	1550	53%	1075	+255	1550	0	69%
Midtown	Centennial Academy(K-8)*	812	606	134%	0	-812	606	0	0%
	Howard MS	1173	1656	71%	1173	0	1656	0	71%
	Midtown HS	1820	1700	107%	1591	-229	1700	0	94%
Jackson	King MS	842	960	88%	679	-163	960	0	71%
	Maynard Jackson HS	1643	1513	109%	1388	-255	1513	0	92%
Washington	Hollis (K-8)	610	1125	54%	1008	+398	1125	0	90%
	HJ Russell MS	295	1194	25%	295	0	1194	0	25%
	Washington HS	810	1633	50%	1039	+229	1633	0	64%
	Centennial Academy* (K-8 locally authorized charter)	0	606	0%	414	+414	606	0	68%

*Centennial Academy is listed twice. Once to show it moving out of the Midtown Cluster and once again to show it entering the Washington Cluster

Midtown, Jackson, Washington, and Carver Clusters

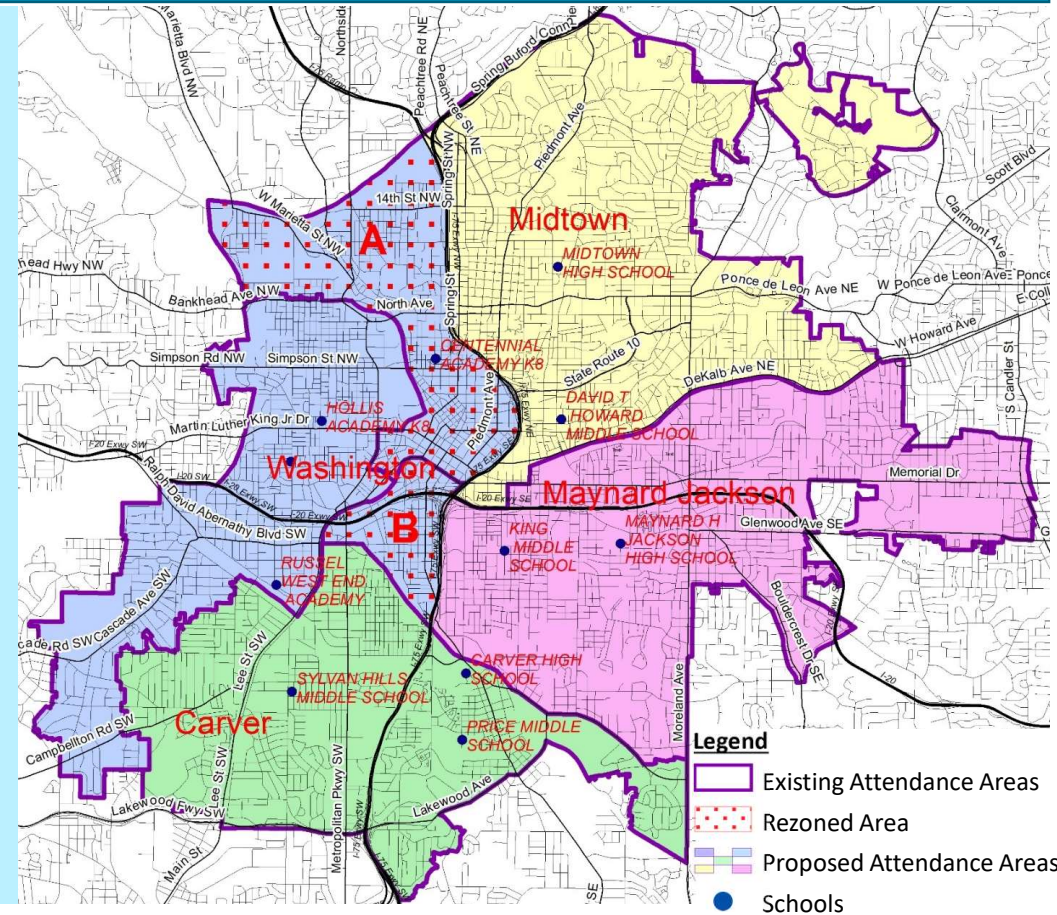
Scenario 2: Actions Addressing Middle, High & K-8 Schools 2026-27

Middle School and High School Cluster Moves

- School lines are redrawn across Midtown, Jackson, and Washington clusters, during the 2023-24 school year.:
 - A: Redistrict Centennial attendance area** from Midtown HS to Washington HS (affects 229 students).
 - B: Redistrict Dunbar attendance area** from MLK MS (Jackson HS) to HJ Russell MS (Washington HS). (163 middle school students and 255 high school students affected).

Centennial Academy Conversion Charter:

- In the Fall of 2022, Centennial and APS will determine a pathway for charter renewal which will affect Scenario 1 or Scenario 2 which will be subject to ABOE and GaDoE approvals.
- Continue Charter at Centennial **as a Conversion Charter with a facility capacity of 600** in 2024-25 contingent on ABOE and GaDOE approval.
 - Centennial is projected to have an enrollment of 812 in the school year 2026-27; 414 of those students would be from out-of-zone. Its Chartered Maximum Enrollment is 800.
 - Its facility capacity is 606.
 - Once the charter is renewed at 600, stop accepting new out of zone students until the school reaches 90% of capacity (540).



Midtown, Jackson, Washington, and Carver Clusters-- Scenario 2: Middle, High & K-8 School Utilization Comparison 2026-27

Cluster	School	"As-Is" 2026-27 SY			Scenario 2. Dunbar to HJ Russell & Inman rezoned as K-5 [23-24], Centennial to Washington [2024-25]				
		Enrollment	Capacity	Utilization	Enrollment	Enrollment Diff	Capacity	Capacity Diff	Utilization
Carver	Price MS	295	960	31%	295	0	960	0	31%
	Sylvan Hills MS	378	922	41%	378	0	922	0	41%
	Carver HS + Early College	820	1550	53%	820	0	1550	0	53%
Midtown	Centennial Academy (K-8) - In Zone Out of Zone	398	606	134%	0	-812	606	0	0%
		414							
	Howard MS	1173	1656	71%	1173	0	1656	0	71%
	Midtown HS	1820	1700	107%	1591	-229	1700	0	94%
Jackson	King MS	842	960	88%	679	-163	960	0	71%
	Maynard Jackson HS	1643	1513	109%	1388	-255	1513	0	92%
Washington	Hollis (K-8)	610	1125	54%	610	0	1125	0	54%
	HJ Russell MS	295	1194	25%	458	+163	1194	0	38%
	Washington HS	810	1633	50%	1294	+484	1633	0	79%
	Centennial Academy (K-8 conversion charter) - In Zone Out of Zone	0	606	0%	398	+398	606	0	94%
					172	+172			

*Centennial Academy is listed twice. Once to show it moving out of the Midtown Cluster and once again to show it entering the Washington Cluster

Recommended Phasing

- Phase 1: 23-24 SY implementation
 - *First Read: May 2022; Approval June 2022*
 - Midtown/Washington/Carver/Jackson clusters
 - K-5 or K-2/3-5 for Midtown elementary schools and rezone as needed
 - Redistrict MS/HS students in Dunbar to Carver/Washington cluster(s)
 - Redistrict HS students in Centennial Academy attendance area from Midtown HS to Washington HS
- Phase 2: 24-25 SY and thereafter
 - *First read: Oct 2022; Approval Nov 2022*
 - 24-25 SY: Determine enrollment cap/facility size for potential new charter for Centennial Academy as resized K-8 Conversion or Locally Authorized Charter
 - 26-27 SY: Mays: rezone from West Manor to Beecher Hills
 - 26-27 SY: Woodson Park Academy rezoned, different grades, or resized, per stipulations of Partner Agreement
 - SPLOST 2022 adjustments: Additions at Toomer and Peyton Forest are not recommended
 - Surplus Property Recommendations

Next Steps

1

**Conduct 4th round
of Community Conversations**

- March 10 – 29th, 2022
 - 3/22: Midtown
 - 3/29: Districtwide

2

**Finalize Recommendation:
Phase 1**

- Final Recommendations (Phase 1): April 15, 2022
- First Read: May 2, 2022
- Approval: June 6, 2022

3

**Finalize Recommendation:
Phase 2**

- Board Retreat (Phase 2 and Surplus Properties): Aug 2022
- Round 5 Community Conversation (Phase 2): Aug-Sep 2022
- Final Recommendations (Phase 2): Sep 15, 2022
- First Read: October 3, 2022
- Approval: November 7, 2022

Engage

1. What clarifying questions do you have?
2. Who may be positively impacted by these scenarios?
3. Who may be negatively impacted by these scenarios?
4. How can the district address those negatively impacted?

Next Steps: Engagement (March-April 2022)

1

Community Conversations

A virtual Kick Off meeting with all clusters to share the “big picture” draft of recommended school options with all stakeholders. Meeting will set the stage for more focused, in person conversations to occur over the next few weeks as follows.

March 10: Virtual Overview

Focused conversations on cluster-specific impacts. Meeting to occur in person at school or other meeting spaces/facilities (e.g., recreation centers, churches) within the community.

- March 15: Centennial Academy*
- March 17: Dunbar*
- March 22: Midtown Cluster*
- March 29: Districtwide

* Phase 1 Scenarios (SY 2023-24)

2

Additional Engagement Opportunities

The following engagements are being planned to provide additional opportunities for feedback and awareness.

- Cluster Advisory Team Meetings
- State of the Cluster Meetings
- School-specific PTA/GO Team Meetings
- Additional engagement based on the needs of the school

3

Outreach Tools

The following tools and methods are recommended to educate and inform stakeholders of the opportunity to participate and provide feedback.

- “Here’s what you need to know” Infographic
- FAQ
- Informational boards at schools in high traffic areas
- Flyer distribution by school staff at carpool drop off/pick up
- Board Member standing meetings/opportunities
- Information distribution through Go Teams
- Information distribution to NPU leadership
- Let’s Talk feedback

APPENDIX

- Current Pre-K and Special Ed Classrooms with Current Capacity

Elementary School

2021-22 Pre-K and Special Ed Classrooms with Current Capacity

Cluster	School Name	Total # of Instructional Spaces	CAPACITY		Current Capacity 2021-22		
			# of Core Classrooms	School Capacity (SSF)	Pre-K Classrooms	Regional Special Education	Current Revised Capacity
Carver	Finch ES	47	35	758	2	6*	584
	Gideons ES	39	32	693	1	0	672
	Perkerson ES	37	25	541	1	4*	433
	Slater ES	43	36	780	0	0	780
	Thomasville ES	43	36	780	0	0	780
Douglass	Boyd ES	35	24	520	2	1	455
	FL Stanton ES	25	15	314	1	1	271
	Harper-Archer ES	59	48	1,040	2	2*	953
	Scott ES	37	26	563	2	1	498
	Usher-Collier ES	46	36	769	2	4	639
	Woodson Park K-8	43	36	780	0	0	780
Midtown	Hope-Hill ES	34	23	497	2	2	410
	Mary Lin ES	45	35	758	0	0	758
	Morningside ES	51	40	867	0	0	867
	Springdale Park ES	45	35	758	0	1	737

* Includes Pre-K Special Ed

**Facility Location of Special Ed in Split Campuses is not designated

Elementary School

2021-22 Pre-K and Special Ed Classrooms with Current Capacity

Cluster	School Name	Total # of Instructional Spaces	CAPACITY		Current Capacity 2021-22		
			# of Core Classrooms	School Capacity (SSF)	Pre-K Classrooms	Regional Special Education	Current Revised Capacity
Jackson	Benteen ES	38	28	596	2	1	531
	Burgess-Peterson ES	46	37	802	0	5	693
	Dunbar ES	31	20	433	1	0	412
	Obama Academy ES	40	29	628	1	4***	520
	Parkside ES	40	31	661	2	2	574
	Toomer ES	34	25	531	0	2	488
North Atlanta	Bolton ES	45	36	780	2	4*	650
	Brandon ES (3-5)	43	36	804	1	0	782
	Brandon Primary (K-2)	37	30	630	0	0	630
	Garden Hills ES	42	33	715	2	2	628
	Jackson Primary (K-1)	26	19	399	2	2* **	315
	Jackson ES (2-5)	41	34	748	0	0**	748
	Rivers ES	59	51	1,105	2	1	1,040
	Smith Intermediate (3-5)	38	31	681	0	2**	637
	Smith ES (K-2)	36	29	599	1	0**	578

* Includes Pre-K Special Ed

** Facility Location of Special Ed in Split Campuses is not designated

Elementary School

2021-22 Pre-K and Special Ed Classrooms with Current Capacity

Cluster	School Name	Total # of Instructional Spaces	CAPACITY		Current Capacity 2021-22		
			# of Core Classrooms	School Capacity (SSF)	Pre-K Classrooms	Regional Special Education	Current Revised Capacity
Mays	Beecher Hills ES	27	17	368	1	2	303
	Cascade ES	31	21	444	1	2	379
	Miles ES	44	34	726	2	2*	639
	West Manor ES	20	10	217	0	0	217
	Peyton Forest ES	31	21	444	2	2	358
South Atlanta	Cleveland ES	37	26	554	1	2	489
	Dobbs ES	48	36	788	1	1	745
	Heritage Academy ES	43	31	678	1	1	635
	Humphries ES	31	20	427	1	2	362
	Hutchinson ES	38	26	568	1	1*	525
Therrell	Continental Colony ES	35	23	507	2	0	464
	Deerwood Academy ES	46	37	791	2	1	726
	Fickett ES	47	36	772	1	3*	685
	Kimberly ES	37	25	549	1	2	484
Washington	MA Jones ES	47	35	764	2	0	720
	Tuskegee Airmen ES	49	37	798	1	2	733

* Includes Pre-K Special Ed

**Facility Location of Special Ed in Split Campuses is not designated

Middle School

2021-22 Pre-K and Special Ed Classrooms with Current Capacity

Cluster	School Name	Total # of Instructional Spaces	CAPACITY		Current Capacity 2021-22		
			# of Core Classrooms	School Capacity (SSF)	Pre-K Classrooms	Regional Special Education	Current Revised Capacity
Carver	Price MS	52	40	960	0	0	960
	Sylvan Hills MS	56	38	922	0	1	898
Douglass	Lewis Academy MS	93	77	1,848	0	0	1,848
Midtown	Howard MS	84	73	1,656	0	2	1,704
Jackson	King MS	56	40	960	0	2	912
Mays	Young MS	64	48	1,152	0	1	1,128
N. Atlanta	Sutton 7-8 (Northside)	88	75	1,800	0	2	1,752
	Sutton 6th (Powers Ferry)	67	54	1,296	0	0	1,296
S. Atlanta	Long MS	61	43	1,031	0	2***	983
Therrell	Bunche MS	58	39	934	0	0	934
Washington	Russell West End MS	67	50	1,194	0	0	1,194

*** GNETS Outpost not listed

High School

2021-22 Pre-K and Special Ed Classrooms with Current Capacity

Cluster	School Name	Total # of Instructional Spaces	CAPACITY	Current Capacity 2021-22		
			School Capacity (SSF)	Pre-K Classrooms	Regional Special Education	Current Revised Capacity
Carver	Carver HS	87	1,550	0	2	1,500
	Douglass HS	106	2,125	0	3	2,050
Midtown	Midtown HS	88	1,700	0	2	1,650
Jackson	Jackson HS	81	1,513	0	3	1,438
Mays	Mays HS	100	1,975	0	4	1,875
N. Atlanta	North Atlanta HS	127	2,750	0	3***	2,675
S. Atlanta	South Atlanta HS	88	1,618	0	6***	1,468
	Therrell HS	78	1,373	0	2	1,323
Washington	Washington HS	88	1,633	0	0	1,633

***GNET Outpost not included

Multi-Grade Level School

2021-22 Pre-K and Special Ed Classrooms with Current Capacity

Cluster	School Name	Total # of Instructional Spaces	CAPACITY		Current Capacity 2021-22		
			# of Core Classrooms	School Capacity (SSF)	Pre-K Classrooms	Regional Special Education	Current Revised Capacity
Citywide	BEST /C.S. King (6-12)	90	72	1,769	0	0	1,769
Midtown	Centennial Place (K-8)	34	27	606	0	0	606
Washington	Hollis (K-8)	72	50	1,125	2	5*	968
Douglas	Woodson Park	43	36	808	0	0	808

* Includes Pre-K Special ED

Strategic Approaches

The intent is to **group Clusters** according to **related or similar issues**:

- These scenarios address school facilities, school and cluster boundaries and school enrollment only
- Off-site and landscape issues are not considered by this masterplan
- The teaching, course of study, and the specific allocation of resources within schools are not considered by this masterplan

For each Similar or Related Cluster Group provide:

- Scenario 1 to solve the over-utilization in the area
- Scenario 2 to provide an alternate set of possible solutions

Scenario 1 will, wherever possible:

- Maintain existing K-5, 6-8, 9-12 grade configurations
- Provide a roughly balanced utilization among the affected schools, while maintaining guidelines, school zone and cluster zone lines along neighborhood boundaries
- Limit construction when sufficient capacity exists nearby

Scenario 2 will, wherever possible:

- Change school zone and district zone lines along neighborhood boundaries
- The underutilized schools will be brought to a roughly balanced utilization where rezoning is necessary between under and over utilized schools are not considered by this masterplan
- Limit construction when sufficient capacity exists nearby

Implementation of rezoning, if needed, begins no earlier than in 2023-2024 school year

*All approaches propose to build to 85% of the 2030 Need

Sample School “Feeder”

1600 STUDENTS

- 1600 per school (x1)
- 400 per grade (9-12)

HIGH
SCHOOL

1200 STUDENTS

- 600 per school (x2)
- 200 per grade (6-8) X 3 grades

MIDDLE
SCHOOL 1

MIDDLE
SCHOOL 2

2400 STUDENTS

- 600 per school (x4)
- 100 per grade (K-5) X 6 grades

ELEMENTARY
SCHOOL 1

ELEMENTARY
SCHOOL 2

ELEMENTARY
SCHOOL 3

ELEMENTARY
SCHOOL 4

ENTERING CLASS OF $100 \times 4 = 400$

Our Purpose

Scenarios will leverage opportunities to accommodate Future Enrollment within APS (active and inactive) properties with the ultimate objective of:

Creating the best learning environment for our children with the resources available.



Recommended Actions by Utilization Triggers

If Utilization is 90% to 105% consider:

- Programmatic / administrative accommodations such as
- Elementary Schools:
 - Terminate Administrative Transfers
 - Use floating Art & Music teachers
- Middle & High Schools:
 - Terminate Administrative Transfers
 - Floating Teachers
 - Full use of classroom during Planning Period

If Utilization is over 105% consider:

- Modular Classrooms (if site will accommodate)
- Changing school zones within an existing cluster to shift enrollment from over-utilized schools to under-utilized schools
- Changing cluster boundaries
- Addition, renovation, re-activation of schools, new construction

Size changes to meet 95% of 5 Year Capacity need confirmed by 10-year Capacity

Midtown, Jackson, Washington & Carver Clusters

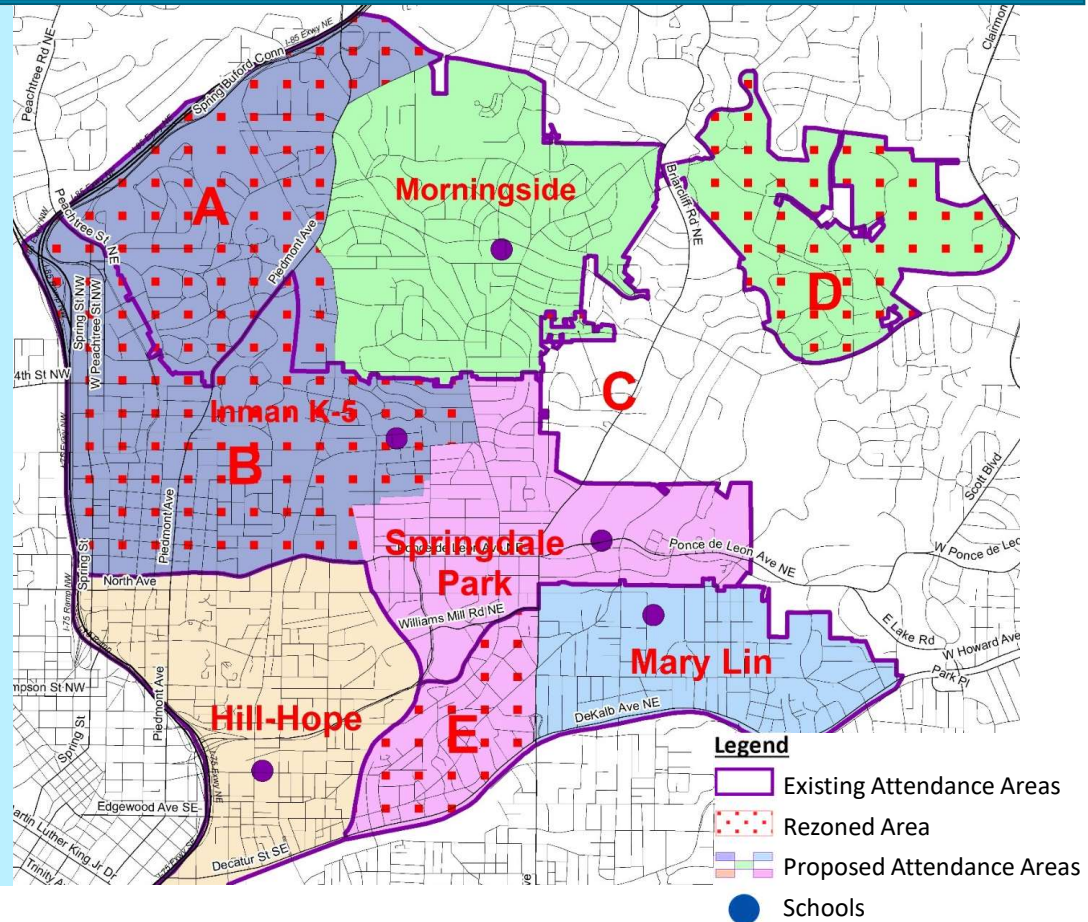
Scenario 1: Actions Addressing Elementary Schools in the Midtown Cluster in 2026-27

Midtown Cluster Elementary Schools - 2023-24 SY:

- Former Inman middle school to serve as a K-5 elementary school
- No change to the Hope Hill attendance area
- School Zone lines are redrawn in the Midtown Cluster:
 - A: Move 239 students from Morningside, north and west roughly along Piedmont Ave. to the Inman Facility.
 - B: Move 404 students from western portion of Springdale Park to the Inman facility.
 - C: Move 8 students from the Isolated area east of Morningside from Springdale to Morningside
 - D: Move 14 students from the DeKalb County/Emory Annexed area (in Springdale zone) to Morningside
 - E: Move 159 Students, west of Moreland Ave in the Mary-Lin attendance area to Springdale Park

Jackson/Washington/Carver Cluster Elementary Schools

- Renovations to Toomer are recommended. An addition to Toomer is not recommended. (modification to SPLOST 2022)
- In Fall 2022, temporarily close Thomasville Heights. Move all remaining students to Slater ES. Monitor for the return of students with the repopulation of the Forest Cove development when it occurs.



Midtown, Jackson, Washington, and Carver Clusters-- Scenario 1: Elementary School Utilization Comparison 2026-27

Cluster	School	"As-Is" 2026-27 SY			Scenario 1. Inman as K-5, Dunbar to Carver Cluster[2023-24]				
		Enrollment	Capacity	Utilization	Enrollment	Enrollment Difference	Capacity	Capacity Difference	Utilization
Carver	Finch ES	306	758	40%	306	0	758	0	40%
	Gideons ES	283	693	41%	283	0	693	0	41%
	Perkerson ES	303	541	56%	303	0	541	0	56%
	Slater ES	420	780	54%	469	+49	780	0	60%
Midtown	Hope-Hill ES (K-5)	408	497	82%	408	0	497	0	82%
	Inman ES (K-5)	0	932	0%	643	+643	932	0	69%
	Mary Lin ES (K-5)	625	758	82%	466	-159	758	0	61%
	Morningside ES (K-5)	896	867	103%	679	-217	867	0	78%
	Springdale Park ES (K-5)	801	758	106%	548	-253	758	0	72%
Jackson	Benteen ES	185	596	31%	185	0	596	0	31%
	Burgess-Peterson ES	539	802	67%	539	0	802	0	67%
	Dunbar ES	280	433	65%	280	0	433	0	65%
	Obama ES	267	628	43%	267	0	628	0	43%
	Parkside ES	550	661	83%	550	0	661	0	83%
	Toomer ES	417	531	79%	417	0	531	0	79%
Washington	MA Jones ES	511	764	67%	511	0	764	0	67%
	Tuskegee Academy	491	798	62%	491	0	798	0	62%

Midtown, Jackson, Washington & Carver Clusters

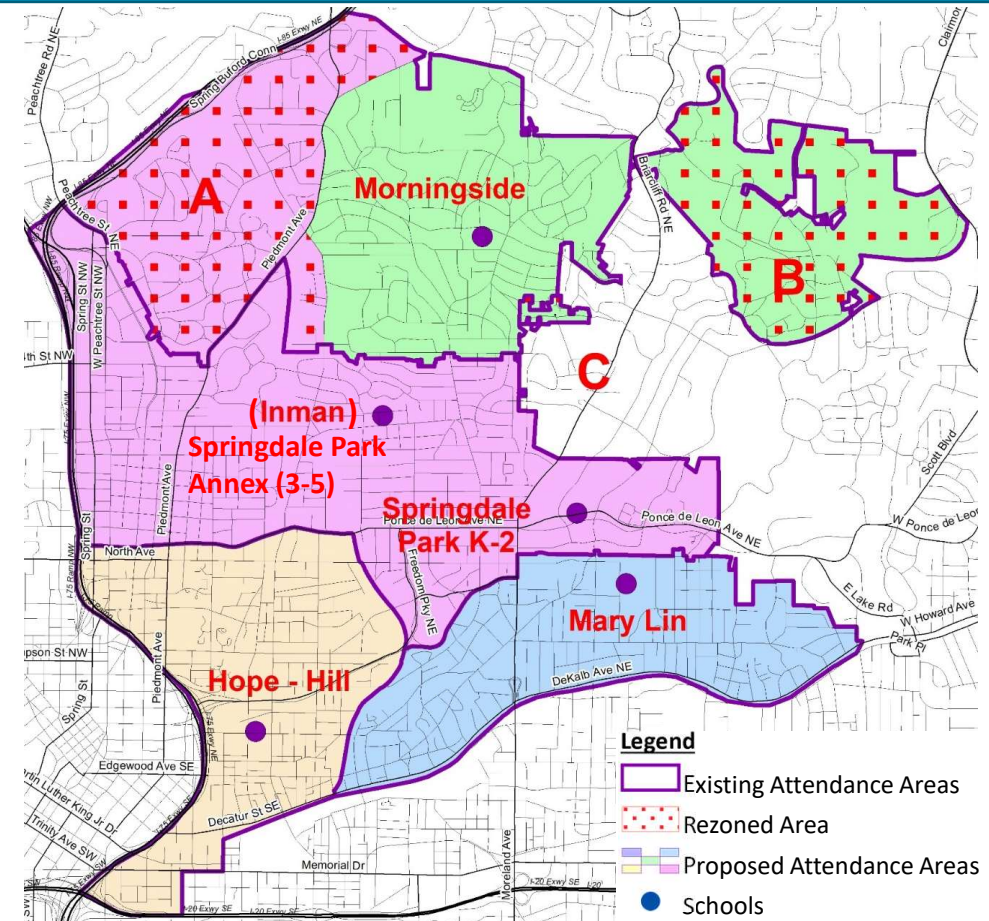
Scenario 2: Actions Addressing Elementary Schools in the Midtown Cluster in 2026-27

Midtown Cluster Elementary Schools – Implementation 2023-24:

- Springdale Park Facility is a K-2, with the Inman Facility as a 3-5 annex
- No changes to Mary Lin and Hope Hill attendance areas
- School Zone lines are redrawn in the Midtown Cluster:
 - **A:** Move 239 students from Morningside (K-5) North and West roughly along Piedmont Ave. to Springdale Park (K-2/3-5)
 - **B:** Move 14 students from the DeKalb County/Emory Annexed area in Springdale to Morningside
 - **C:** Move 8 students from the Isolated area east of Morningside from Springdale to Morningside

Jackson/Washington/Carver Cluster Elementary Schools

- Renovations to Toomer are recommended. An addition to Toomer is not recommended. (modification to SPLOST 2022)
- In Fall 2022, temporarily close Thomasville Heights. Move all remaining students to Slater ES. Monitor for the return of students with the repopulation of the Forest Cove development when it occurs.



Midtown, Jackson, Washington, and Carver Clusters-- Scenario 2: Elementary School Utilization Comparison 2026-27

Cluster	School	"As-Is" 2026-27 SY			Sc 2. Inman rezoned as K-5 [2023-24]				
		Enrollment	Capacity	Utilization %	Enrollment	Enrollment Difference	Capacity	Capacity Difference	Utilization %
Carver	Finch ES	306	758	40%	306	0	758	0	40%
	Gideons ES	283	693	41%	283	0	693	0	41%
	Perkerson ES	303	541	56%	303	0	541	0	56%
	Slater ES	420	780	54%	469	+49	780	0	60%
Midtown	Hope-Hill ES (K-5)	408	497	82%	408	0	497	0	82%
	Springdale Park Annex @ Former Inman (3-5)	0	932	0%	516	+516	932	0	55%
	Mary Lin ES (K-5)	625	758	82%	625	0	758	0	82%
	Morningside ES (K-5)	896	867	103%	679	-217	867	0	78%
	Springdale Park ES (K-2)	801	758	106%	516	-285	758	0	68%
Jackson	Benteen ES	185	596	31%	185	0	596	0	31%
	Burgess-Peterson ES	539	802	67%	539	0	802	0	67%
	Dunbar ES	280	433	65%	280	0	433	0	65%
	Obama ES	267	628	43%	267	0	628	0	43%
	Parkside ES	550	661	83%	550	0	661	0	83%
	Toomer ES	417	531	79%	417	0	531	0	79%
Washington	MA Jones ES	511	764	67%	511	0	764	0	67%
	Tuskegee Acad.	491	798	62%	491	0	798	0	62%